

St Modan's High School

87th Session



Setting the Highest Standards

P7 Open Evening

Welcome



June 2020

How the meeting will work...



Setting the Highest Standards

- Type your name in the comment/chatbox so we know you are there
- If you have a question then please type it in the comment/chatbox and we will respond during/after the meeting
- Please mute your audio
- Do contact us by email pupilsupportstmodans@stirling.gov.uk (all lower case) and give us feedback on the meeting.
- Please do not record the meeting
- This information should be shared officially from tomorrow 24th June 2020

Agenda



Setting the Highest Standards

- Welcome and Meeting Prayer
- Return to school
- S1 Induction Day
- Logistics
- Blended Learning & Chromebooks
- ' Plans for Re-connecting our Community'

Meeting Prayer



Setting the Highest Standards

*Be near us Father as we meet today,
inspire our thoughts and light our understanding.*

*Guide us towards your vision for our school
and grant that we may wisely lead
and ever humbly serve
this community of St Modan's entrusted to our care.*

Amen.



Introduction

Return to School



Setting the Highest Standards

The *Contingency* Plan

Split each year group in two A/B

- 1A-2A-3A-4A-5A-6A
- 1B-2B-3B-4B-5B-6B

Considerations – siblings/ timetable (option choices)/ transport

Planned Return to School



Setting the Highest Standards

The School Week

Week	Monday	Tuesday	Wednesday	Thursday	Friday
Induction	INSET	INSET	S1/6	Group A	Group B
1	Group A	Group A	Group A	Group B	Group B
2	Group B	Group B	Group B	Group A	Group A
3	Group A	Group A	Group A	Group B	Group B

The School Day

	S1, 5, 6	S2-4
Period 1	08.40-9.30am	08.40-9.30am
Period 2	9.30-10.10am	9.30-10.20am
Interval	10.10-10.30am	10.20-10.40am
Period 3	10.30-11.25am	10.40-11.25am
Period 4	11.25-12.00pm	11.25am-12.20pm
Lunch	12.00-12.40pm	12.20-12.55pm
Period 5	12.40-1.40pm	12.55-1.40pm
Period 6	1.40-2.30pm	1.40-2.30pm
Period 7	2.30-3.15pm	2.30-3.20pm

Return to School



Setting the Highest Standards

How it works –

- Mini Modan's (non-practical subjects) - reconnecting curriculum
- Home Economics – PE – practical subjects
- Transport

Academic Development



Setting the Highest Standards

■ S1 Curriculum:



S1 Curriculum



Setting the Highest Standards



S1 Induction



Setting the Highest Standards

Current Plan

Wednesday 12th August

- **All** S1 pupils in school (with S6)
- Meet class/ PSD Teacher
- Transition Activities: Timetables, Timings, School Day, Logistics

Focus: **Familiarisation & Welcome**

Logistics



Setting the Highest Standards

Paper copy of all logistics will be posted out.

- Priority: Health and Safety
- Lunches- packed/ FME
- Lockers- later in the term
- Uniform

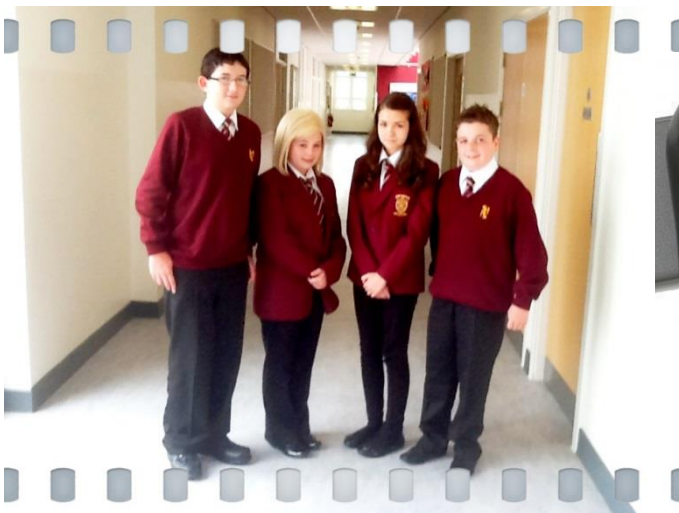
Setting the Highest Standards:



Setting the Highest Standards

With Uniform-

**White shirt /Year Group Tie
School Cardigan/Sweatshirt
Black formal trousers or skirt
Black formal school shoes**



Support with Uniform



Setting the Highest Standards

- FME/ Uniform Grant forms available next week
- Care Experienced Grant application
- *Pre-loved* uniform: Parent Teacher Partnership, Attendance and Welfare Officer, Stirling Council Uniform bank

Orders: Scotcrest, all details on website

Blended Learning



Setting the Highest Standards

- 50% model
- Face to face teaching
- Remote learning

Chromebooks



Setting the Highest Standards

- All S1-S3 will be issued with Chromebooks
- Senior school technology
- Google Classroom
- S1 Curriculum

‘Reconnecting Our Community’



Setting the Highest Standards

“Recovery Curriculum” and ‘Mini Modan’s’

- Wellbeing- Mental, Emotional, Spiritual
- Learning

Values



Setting the Highest Standards



Junior Chaplaincy Team



Setting the Highest Standards





Setting the Highest Standards





Setting the Highest Standards



Team work for charity



Setting the Highest Standards



S1 Coin Challenge



Setting the Highest Standards



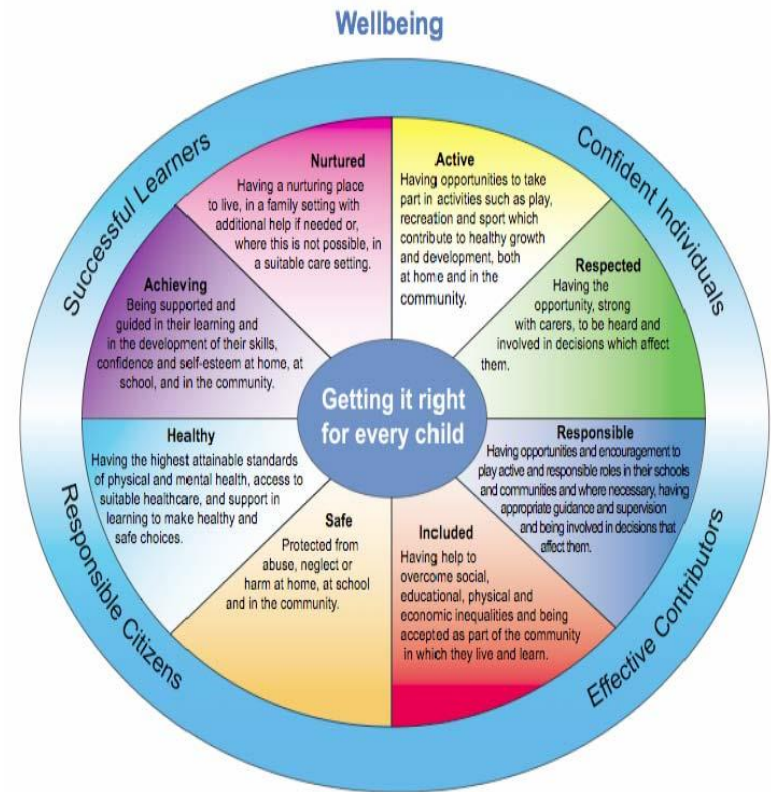
S1 Pupil Support and Development Team



Setting the Highest Standards

PSD Teacher's Role: Principal Teacher PSD

- Friendly Face
- Daily Contact
- Caring and Consistent Approach
- Mental Wellbeing
- Health and Wellbeing





S1 PSD Team

DHTs for S1:

Mrs Shandley and Mrs McGeehan

PT PSD for S1 & S6: Miss Sinclair

S1 PSD Team of Teachers

S1 PSD Teacher Team



Setting the Highest Standards

- 1A1 Mrs Fitzsimons
- 1A2 Mr Hope
- 1K1 Miss Aitkenhead
- 1K2 Miss Henderson
- 1R1 Mrs Ramsay (PT Wellbeing)
- 1R2 Miss Paterson

‘Reconnecting Our Community’



Setting the Highest Standards

“Recovery Curriculum”:

- Wellbeing- Mental, Emotional, Spiritual
- Learning

Learning



Setting the Highest Standards

- Information gathered from primaries for current picture
- ASN information gathered through transition process
- Staff planning next steps in the curriculum-identifying barriers and agreeing the way forward

Parental involvement



Setting the Highest Standards

Parent Teacher Partnership

